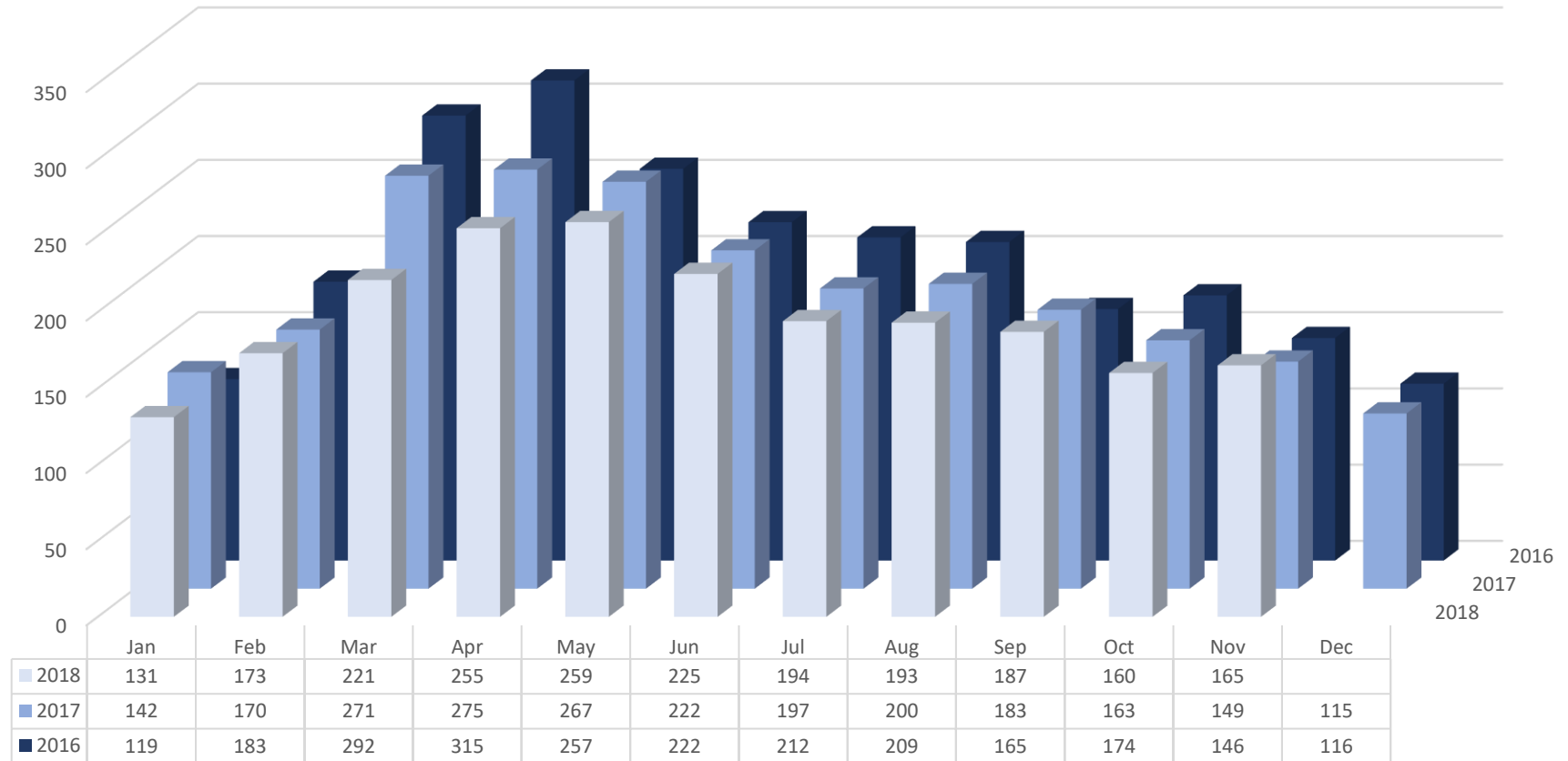


# Rochester, Minnesota

## Number of Listings to Pending by Month

### All Residential Ownership Types



% chg month v. year earlier	-7.7%	1.8%	-18.5%	-7.3%	-3.0%	1.4%	-1.5%	-3.5%	2.2%	-1.8%	10.7%	
% chg ytd v. ytd year earlier	-7.7%	-2.6%	-9.9%	-9.1%	-7.6%	-6.2%	-5.6%	-5.3%	-4.6%	-4.4%	-3.4%	

