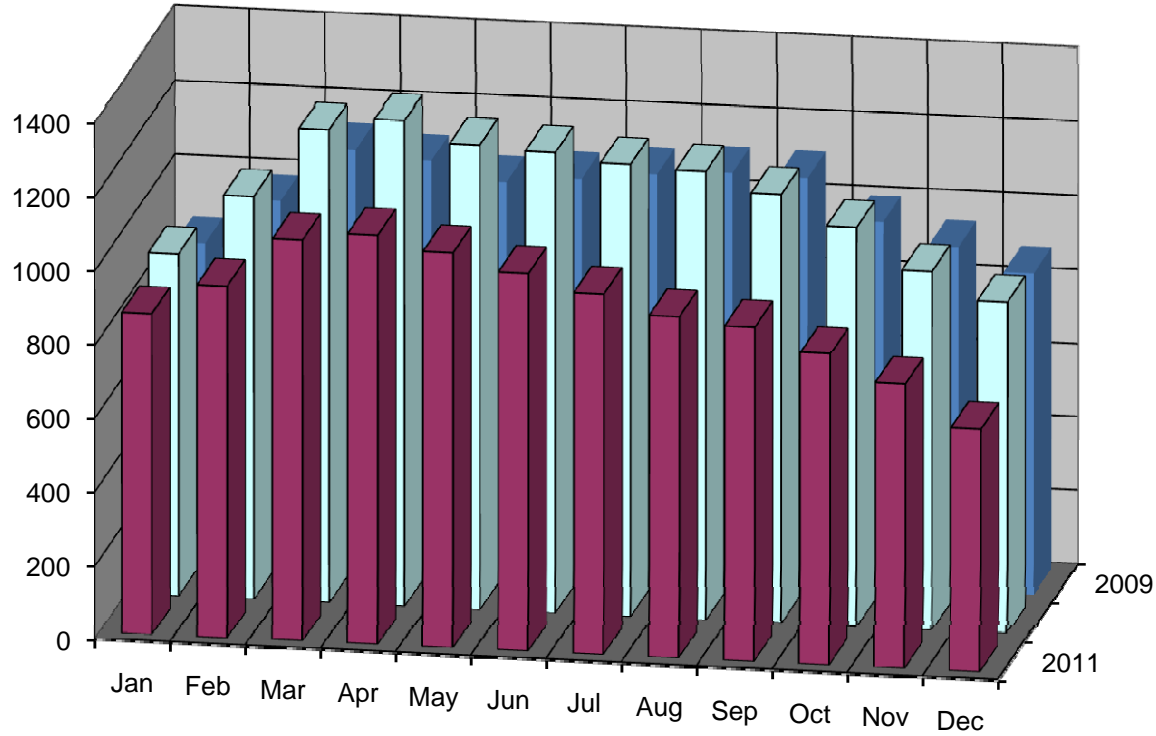


# Active Listing Inventory

## Rochester - Residential - All Ownership Types



	Jan	Feb	Mar	Apr	May	Jun	Jul	Aug	Sep	Oct	Nov	Dec
■ 2011	874	957	1090	1113	1075	1029	983	931	912	848	775	662
□ 2010	929	1094	1283	1317	1261	1249	1227	1217	1165	1084	975	902
■ 2009	852	976	1124	1103	1055	1074	1095	1108	1104	993	935	874

% chg month v. year earlier      -5.9%    -12.5%    -15.0%    -15.5%    -14.8%    -17.6%    -19.9%    -23.5%    -21.7%    -21.8%    -20.5%    -20.5%